

**NARAYANA COLLEGE OF NURSING
CHINTHAREDDY PALEM, NELLORE
VALUE ADDED COURSE REPORT ON “NURSE LED CLINIC”**

Department of medical surgical nursing conducted a Value added course on “Nurse Led Clinic” on 25/02/2019 to 27/02/2019 organized by department of Medical Surgical Nursing faculty. The programme began with the prayer song by the students and Lamp lighting by the chief guest **Dr. Indira .S. Principal** Narayana College of Nursing and other distinguished guest.



Pre test questionnaires were given to total 214 samples {26 faculties and 188 students} before starting the session. Mrs.Latha.A, M.Sc (N), Professor Welcomed the gathering.

On day 1 session, Dr. Indira .S, Professor, presented about introduction on Nurse Led Clinic i.e., definition, aims, vision and values. **Mrs.A.Latha**, M.Sc (N), Professor presented about objectives, milestones on Nurse Led Clinic, support from agencies , accredited nursing councils. **Mrs.Kanakalakshmi M.sc** (N) Asso. Professor presented about Policies, protocol guidelines & principles, **Mrs.K.Padma**, M.Sc (N), and Asst. Professor presented about Types of Nurse Led Clinic like nurse led in oncology, in cardiology, in outpatient department, in general practice, in PHC, in arthritis conditions, in triage and in nurse practitioner and challenges in development. Then Mrs.K.Padma M.Sc (N), Asst. Professor conducted Activity 1 consists of 4 rounds named as “**Guess the answer & win the prize**”. **Ms. Blessy Jenet 2nd yr M.sc** (N) presented about NLC- Infrastructure, elements for constructing a nurse led clinic and factors that impact on the clinic. **Mrs.V.Rupa Sarithareddy M.Sc** (N), Professor presented about NLC- Functions & steps. **Mrs.Subhashini, MSc** (N), Asst. Professor explained about NLC- Safeguard service quality & practical issues in this, mechanisms to safeguard service quality, clinical governance, clinical audit and evidence – based care and clinical effectiveness. **Ms.Arundhathi M.Sc** (N), Asst. Professor presented about NLC- Merits in clinical and economic and miscellaneous, demerits & Barriers. **Ms.Arunakumari**, M.Sc (N), Asst. Professor presented about NLC- Outcome like quality of life, satisfaction, patient compliance & evaluation.

On day 2 session, Mrs.K.Padma, M.Sc (N), Asst. Professor presented about Introduction on NLC on its goals and objectives. **Mrs.A.Latha**, M.Sc (N), Professor presented about NLC- OP Clinic on principles and activities that performing in OP like first aid, dressing, follow up care, family counseling, health

education on DM, HTN, training for self administration of insulin and minor procedure for pain and mobilization. **Mrs.Subhashini, MSc (N)**, Asst.Professor explained about NLC- general practice its definition, major roles, focused services and benefits and also conducted activity on “**Memory test**”. **Mrs.Kanakalakshmi M.sc (N)** Asso. Professor presented about NLC- Obstetrics & gynaecology its definition, common features, scope, principles and job description & benefits by Obs&gynec nurse. **Mrs.V.Rupa Sarithareddy M.Sc (N)**, Professor presented about NLC- Arthritis, its definition, goals, assessment and roles of arthritis nurse.

On day 3 session, Mrs.Kanakalakshmi M.sc(N) Asso. Professor presented about NLC- Introduction, history, definition, goals and objectives and also conducted activity on “**Quiz programme**”. **Ms.Arunakumari, M.Sc (N)**, Asst. Professor presented about NLC- Triage its definition, purpose, survey, current issues, benefits, advanced skills and protocols. **Ms.Arundhathi M.Sc (N)**, Asst. Professor presented about NLC- PHC its definition, services, scope and benefits by PHC nurse followed by activity i.e., “**Image identifier**”. **Ms.Arunakumari, M.Sc (N)**, Asst. Professor presented about NLC- Role of nurse. **Ms. Navya 2ndyr M.Sc (N)** presented about NLC abstracts.

OVERALL ANALYSIS:

Table no:1 Frequency and percentage distribution among Participants

N=214

GRADE	PARTICIPANTS			
	PRE-TEST		POST TEST	
	FREQUENCY (F)	PERCENTAGE (%)	FREQUENCY (F)	PERCENTAGE (%)
A+	0	0	99	46.3
A	5	2.3	80	37.3
B	63	29.4	35	16.4
C	78	36.5	0	0
D	68	31.8	0	0
TOTAL	214	100	214	100

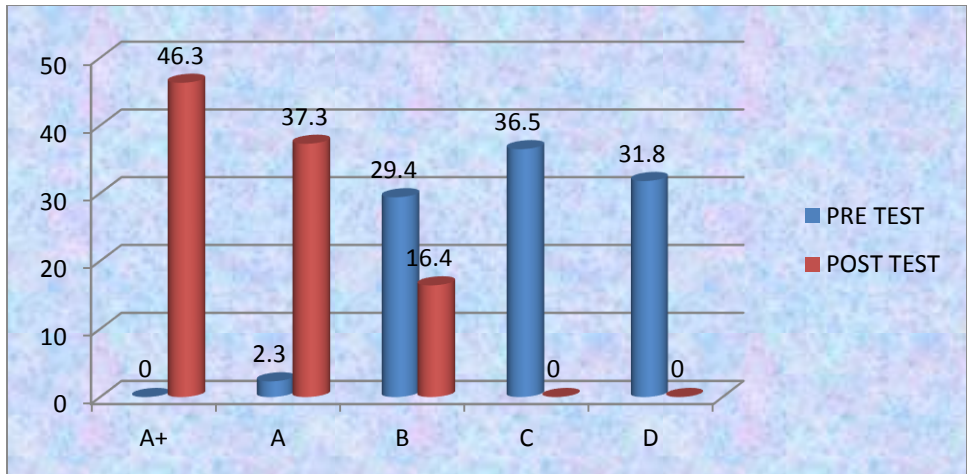


Fig no.01 COMPARISION OF PRE TEST & POST TEST SCORES AMONG PARTICIPANTS

ANALYSIS:

**Table no:2 Frequency and percentage distribution among Nursing faculty
N=26**

GRADE	NURSING FACULTY			
	PRE-TEST		POST TEST	
	FREQUENCY (F)	PERCENTAGE (%)	FREQUENCY (F)	PERCENTAGE (%)
A+	0	0	11	42.3
A	3	11.5	13	50.0
B	5	19.2	2	7.7
C	10	38.5	0	0
D	8	30.8	0	0
TOTAL	26	100	26	100

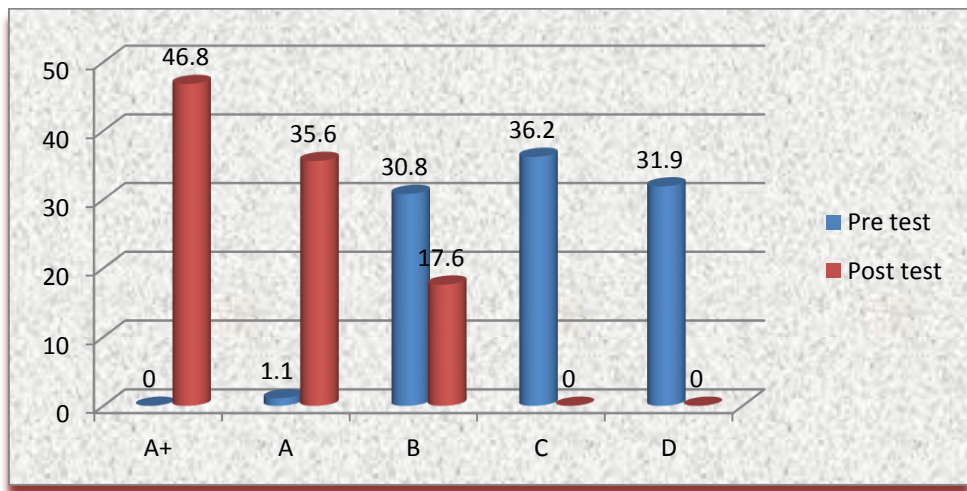


Fig no:2 COMPARISION OF PRE TEST & POST TEST SCORES AMONG NURSING FACULTY

Table no:3 Frequency and percentage distribution among Nursing students

N=188

GRADE	NURSING STUDENTS			
	PRE-TEST		POST TEST	
	FREQUENCY (F)	PERCENTAGE (%)	FREQUENCY (F)	PERCENTAGE (%)
A+	0	0	88	46.8
A	2	1.1	67	35.6
B	58	30.8	33	17.6
C	68	36.2	0	0
D	60	31.9	0	0
TOTAL	188	100	188	100

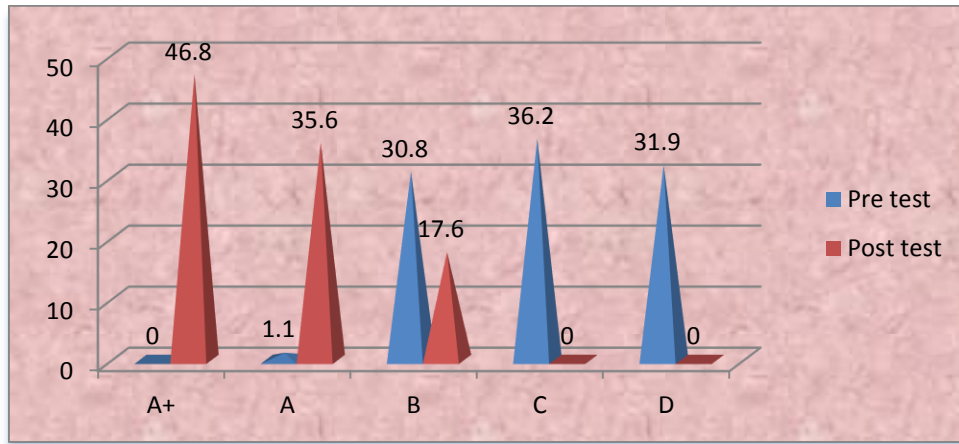


Fig no.3 COMPARISION OF PRE TEST & POST TEST SCORES AMONG NURSING STUDENTS

The findings concluded that value added course was very effective in improving knowledge on Nurse led clinic among participants and participants also very much interested to practice in future.

At the end of all the above speeches **Prof. Mrs.Indira.S** summarized the whole topic and involved the audience too in bringing up their view points during the discussion. At the end the programme Dr. Indira .S, Principal distributed the certificates to all the speakers. Post test was conducted with the vote of thanks given by Ms.DivyaVani and National anthem.

FEED BACK ANALYSIS:

Table no: 4: Frequency and percentage distribution of feedback analysis among participants N=214

DESCRIPTION	PARTICIPANTS	
	FREQUENCY (F)	PERCENTAGE (%)
EXCELLENT	101	47.2
VERY GOOD	79	36.9
GOOD	34	15.9
AVERAGE	0	0
POOR	0	0
TOTAL	214	100

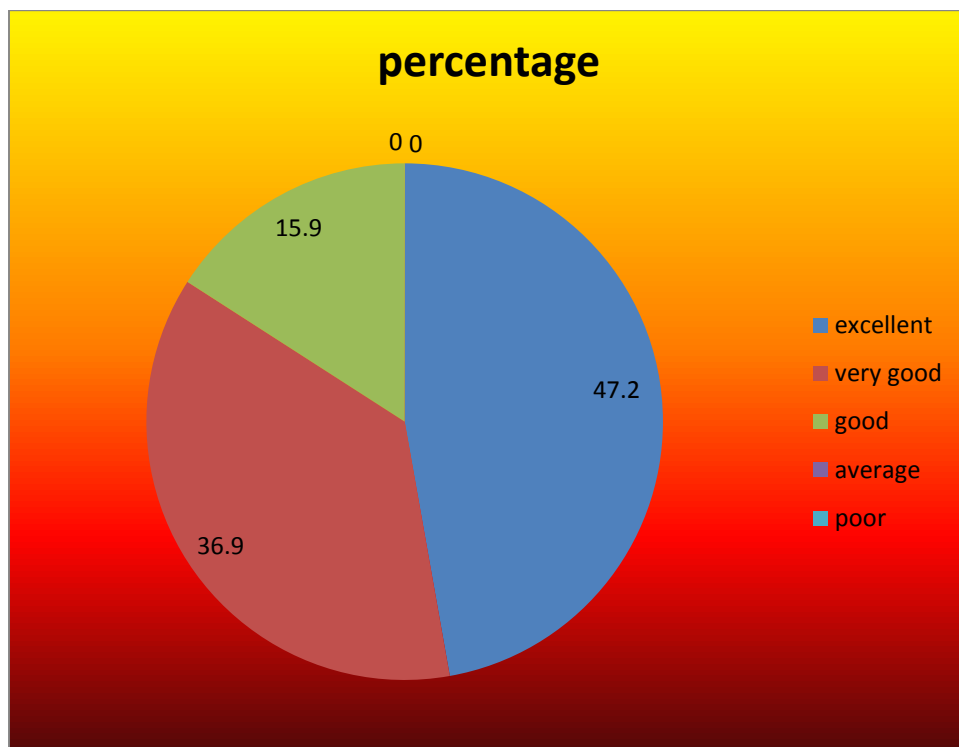


FIG no. 4: percentage distribution of feedback analysis among participants



